

# NOVAhush



## Acoustic Wall Covering

### APPLICATION

Mammoth™ NOVAhush Acoustic wall covering is 100% polyester and designed to be used as an interior surface lining in commercial or residential spaces to help reduce noise reverberation. Manufactured from 100% polyester with a decorative facing allowing creativity with colour and design.

Acoustic wall covering is suitable for walls in classrooms, libraries and office spaces as it is durable, hard wearing, helps reduce noise levels and has design flexibility to create contrasting colours, inlays and borders.

NOVAhush Acoustic Wall covering gained the supreme Group 1S rating under ISO 9705 Fire test, making it a versatile and safe choice for any surface covering.



### PRODUCT FEATURES AND BENEFITS

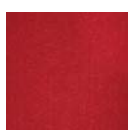
- Effective noise reduction.
- Safe to use as an Interior surface liner.
- Easy to install, and wraps around corners.
- No precautions are required for handling the product - it will not cause irritation when touched.
- Manufactured using fibres from recycled plastic bottles - 100% recyclable.
- Odourless, non-irritant with no added chemicals.
- Manufactured by InsulPro Manufacturing Ltd, a carboNZero certified organisation.

### PRODUCT

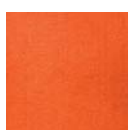
PRODUCT	Nominal Thickness (mm)	Dimensions (mm)	Total Area per pack (m <sup>2</sup> )
Mammoth™ NOVAhush Acoustic Wall covering	8-10	20000 x 1200	24.00

Mammoth NOVAhush Acoustic wall covering is designed for acoustic application and the surface may show creases, wrinkles or slight colour variations due to the manufacturing process.

### AVAILABLE COLOURS



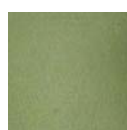
308  
POHUTUKAWA



307  
SUNSET



310  
KOWHAI



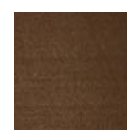
323  
ALOE



301  
KEA



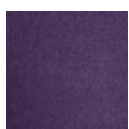
315  
MAIDENS HAIR



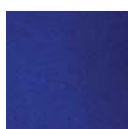
311  
RIMU



322  
SAND



317  
PINOT



304  
PUKEKO



321  
MARLIN



309  
PACIFIC BLUE



319  
CLOUD



324  
FOG



306  
SLATE



302  
EBONY

# TECHNICAL DETAILS

Technical Attributes	Standard	Test Result
<b>Product Safety</b>		
✓ Noise reduction coefficient (NRC)	ASTM C423	0.35
✓ Water Vapour Sorption (by weight)	ASTM C1104	0.3%
✓ Non Toxic	OSH Health and Safety Guidelines <sup>1</sup>	Polyester products 'non-toxic' and 'non-irritant'
✓ Non Irritant	OSH Health and Safety Guidelines <sup>1</sup>	
✓ Respiratory Safe	n/a	Polyester fibres are non-respirable
✓ Fire Test	ISO 9705: 1993 and AS ISO 9705: 2003	Australia Group Number: 1 SMOGRARC: Less than 100 m <sup>2</sup> /s <sup>2</sup> New Zealand Group Number: 1S Smoke Production Rate: Less than 5.0 m <sup>2</sup> /s <sup>2</sup>
	EN13501-1: 2007	B - s1 - d0
✓ Colour Fastness	ISO 105 B02-2014 (Grey Scale 1-5) Light Fastness Rating: 4	Mammoth Wall Covering is suitable for indoor use only
✓ VOC Emission Safe	Total VOC ≤ 0.5mg/m <sup>3</sup> Formaldehyde ≤ 0.06mg/m <sup>3</sup>	< 0.04mg/m <sup>3</sup> - level below detection <sup>3</sup> < 0.009mg/m <sup>3</sup> - level below detection <sup>3</sup>
✓ Chemical Binders	n/a	Free from any binders
<b>Other</b>		
✓ Non Corrosive	AS/ NZS 4859.1	Materials composed entirely of polyester are regarded as non-corrosive and are exempt from testing. Polyester has alkalinity of PH7.8
✓ Vermin Resistant	n/a	Not a food source for vermin (and not treated)

1 Occupational Safety and Health Service. Health and Safety Guidelines for the Selection and Safe Handling of Synthetic Mineral Fibres. Department of Labour, 1994, p18.  
2 All individual VOCs were less than their threshold limit values. Carcinogens and reproductive toxins were not identified as part of the VOCs  
3 Values are estimates based on test results for another product with a similar surface density (g/m2)

## SPECIFICATION AND INSTALLATION

We recommend using Cantac HSE-TAC contact adhesive to glue Mammoth NOVAhush Wall Covering. For more information on Cantac HSE-TAC contact Glue Guru [www.glueguru.co.nz](http://www.glueguru.co.nz).

Bare concrete surfaces must be sealed prior to gluing Mammoth NOVAhush Wall Covering.

## A SUSTAINABLE CHOICE

- Manufactured within a carboNZero certified organisation.
- Mammoth™ products contain recycled polyester fibres. The recycled fibre used by Mammoth™ comes from recycled plastic bottles.
- Recycling plastic protects the environment by keeping the carbon content locked up in the polyester fibre and reducing landfill waste.
- Mammoth™ products are made in a near zero waste production process and are fully recyclable.

For more information go to [mammoth.co.nz](http://mammoth.co.nz) or contact a Mammoth™ representative.

